

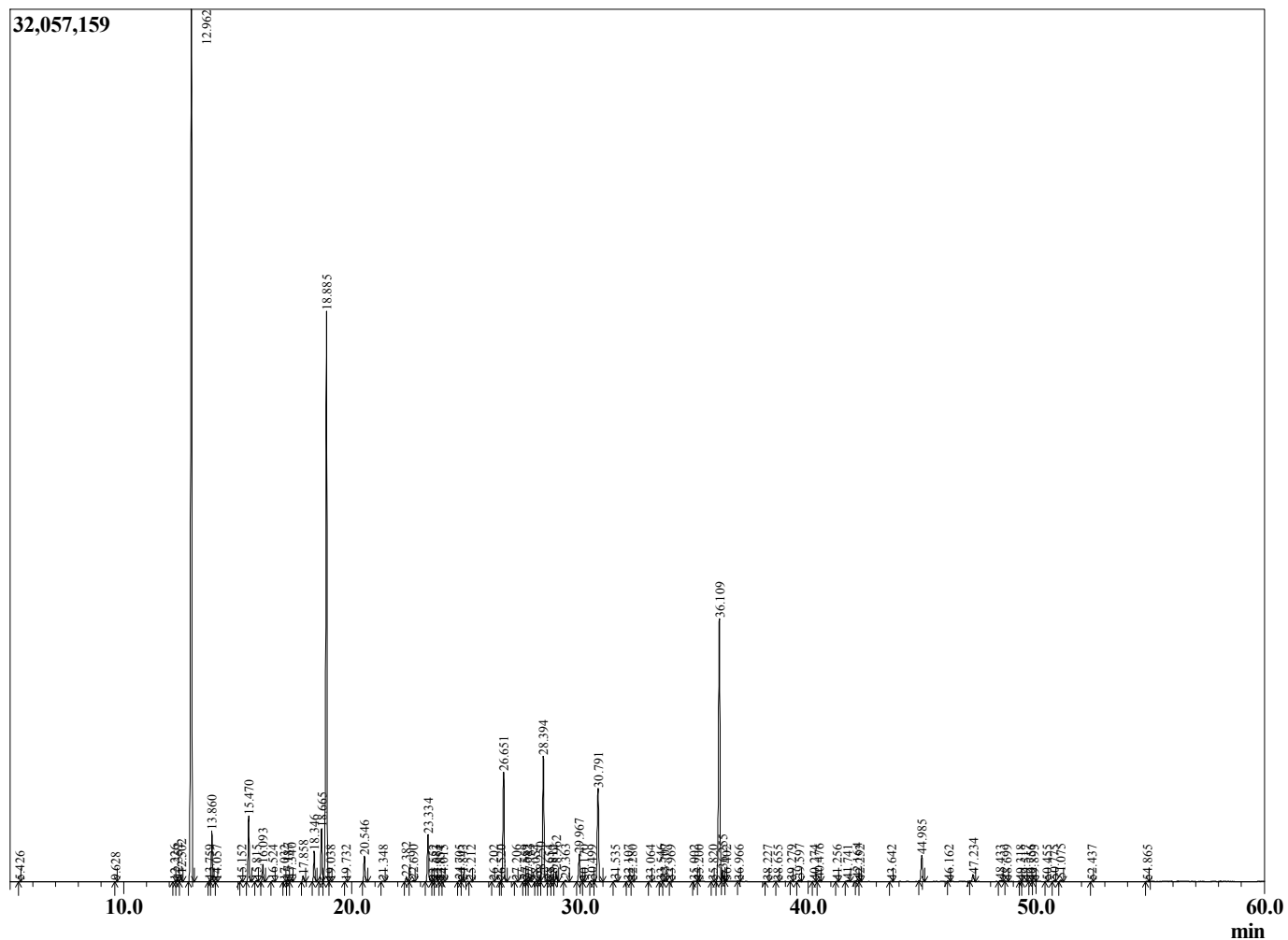
Sample Information

Sample Type : Essential Oil
 Sample Name : Rosmarinus
 Injection : officinalis : 0.10
 Volume :

Rosemary Verbenone
 Lot# ITD8-DC
 Country: Italy



Chromatogram Rosmarinus officinalis



R.Time	Name	Area%
4.224	3-Methylbutanal	0.00
5.426	1-Pentanol	0.01
9.628	Hexanol	0.01
12.226	Hashishene	0.03
12.352	Tricyclene	0.09
12.502	alpha-Thujene	0.22
12.962	alpha-Pinene	34.24
13.759	alpha-Fenchene	0.05
13.860	Camphene	1.73
14.057	Thuja-2,4(10)diene	0.01
15.152	Sabinene	0.03
15.470	beta-Pinene	2.34
15.815	3-Octanone	0.04
16.093	Myrcene	0.62
16.524	3-Octanol	0.04
17.032	Pseudolimonene	0.01
17.187	alpha-Phellandrene	0.08
17.340	delta-3-Carene	0.09
17.858	alpha-Terpinene	0.22
18.346	para-Cymene	1.11
18.665	Limonene	2.16
18.885	1,8-cineole	21.76
19.038	(Z)-beta-Ocimene	0.03
19.732	(E)-beta-Ocimene	0.02
20.546	gamma-Terpinene	0.97
21.348	trans-Sabinene hydrate	0.03
22.382	Terpinolene	0.17
22.690	para-Cymenene	0.04
23.334	Linalool	1.92
23.552	Hotrienol	0.02
23.683	Nonanal	0.01
23.854	Unidentified	0.01
24.015	Unidentified	0.01
24.705	alpha-Fenchol	0.04
24.843	Unidentified	0.01
25.212	alpha-Campholenal	0.02
26.202	trans-Pinocarveol	0.03
26.520	trans-Verbenol	0.02
26.651	Camphor	4.70
27.206	trans-beta-Terpineol	0.03
27.559	trans-Pinocamphone	0.04
27.682	Pinocarvone	0.02
27.783	Isoborneol	0.07
28.054	Unidentified	0.01
28.250	delta-Terpineol	0.18
28.394	Borneol	5.57
28.654	Isopinocampnone	0.04
28.812	Unidentified	0.01
28.962	Terpinen-4-ol	0.47
29.363	para-Cymen-8-ol	0.07
29.967	alpha-Terpineol	1.28
30.170	Methyl chavicol	0.01
30.499	Unidentified	0.04
30.791	Verbenone	4.17
31.535	alpha-Fenchyl acetate	0.08
32.107	Citronellol	0.02

R.Time	Name	Area%
32.280	Bornyl formate	0.01
33.064	Unidentified	0.03
33.546	Unidentified	0.02
33.707	Geraniol	0.06
33.969	Piperitone	0.01
35.002	Unidentified	0.01
35.200	Unidentified	0.01
35.820	Unidentified	0.02
36.109	Bornyl acetate	12.08
36.255	Isobornyl acetate	0.45
36.402	Unidentified	0.01
36.966	Unidentified	0.02
38.227	Unidentified	0.01
38.655	Myrtenyl acetate	0.03
39.279	delta-Elementene	0.01
39.597	Unidentified	0.06
40.274	alpha-Cubebene	0.01
40.476	Eugenol	0.07
41.256	Unidentified	0.01
41.741	alpha-Ylangene	0.07
42.164	alpha-Copaene	0.09
42.252	Geranyl acetate	0.02
43.642	Methyleugenol	0.02
44.985	trans-beta-Caryophyllene	1.22
46.162	Aromadendrene	0.01
47.234	alpha-Humulene	0.33
48.433	trans-Cadina-1(6),4-diene	0.06
48.699	alpha-Amorphene	0.01
49.318	beta-Selinene	0.01
49.517	trans-Murrola-4(14),5-diene	0.02
49.756	alpha-Selinene	0.01
49.893	alpha-Murolene	0.01
50.455	beta-Bisabolene	0.01
50.775	gamma-Cadinene	0.03
51.075	delta-Cadinene	0.07
52.437	alpha-Calacorene	0.01
54.865	Caryophyllene oxide	0.02
		100.00